

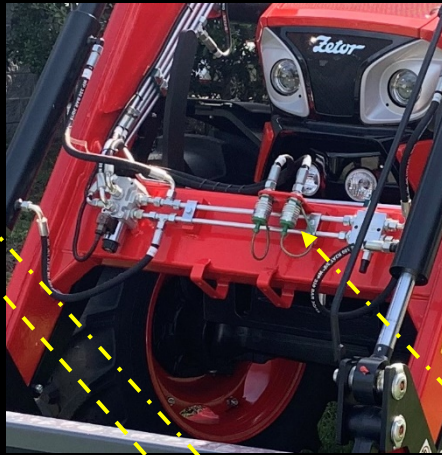


M85 - UTILITY AG SERIES TRACTORS





MODEL	M85SSC	M85PSC HD
Engine – TCD 2.9L4 T4F	4 - Cylinder Common Rail, Water Cooled, TURBOCHARGED Diesel	
Engine Horse Power <i>per ISO 14396'</i>	80.0 Rated (55.4kW) • 75.0 Net (55,4kW) @ 2200 rpm	
Power Take Off (PTO) HP	66.5	64
Transmission Design	12F/12R • 4-Speed • 3-Range	24F/12R • 4-Speed • 3-Range
Transmission Features	▪	Creeper Speeds • PowerClutch™ • Hi/Lo Powershift
Transmission Drive	Synchronized Shuttle Reverser	Synchronized Power Shuttle Reverser
Transmission Clutch	Dry, Cerametallic Disk	Hydraulic, Multi-Wet Clutch Pack
Power Take-Off (PTO)	540/1000	540/1000
PTO Engagement	Mechanical Lever	Electro-Hydraulic 2-Position Switch
PTO Clutch	Dry, Cerametallic Disk	Hydraulic, Multi-Wet Clutch Pack
CAT II/I, 3-Point Hitch	HD Telescopic Stabilizers and Extendable Lower Link Ball Ends, Sliding/Swinging Drawbar	
3-Point Hitch Control	Mechanical Controls, Position • Draft • Mix	
3-Point Hitch Lift Capacity	5,500 (4207 kg)	5,500 (4207 kg) / Optional 7,418 (5800 kg)
Hydraulic Total Flow	20 (75.7 L)	20 (75.7 L)
Rear Valves	2 - Standard, 3 - Optional	
Total Hydraulic Flow	20 (75.7 L)	
Power Steering Flow	6.0 GPM (22.7 L) Tilt Wheel	6.0 GPM (22.7 L) Tilt with Telescopic Wheel
QA MSL Front End Loader	HD MSL ZM229/1 with Factory 3rd Function	
Loader Max Lift Height	136.8 inch (3475 mm)	
Loader Max Lift Capacity	2,855 LBS (1295 kg)	
Operator Platform	Deluxe Climate Control CAB	Premium Climate Control CAB with Swivel Seat
Factory Instructor Seat	Economy, Retractable Seatbelt	Premium Fold-up, Retractable Seatbelt
Tractor Loader Weight	10,323 (4682 kg)	10,825 (4910 kg)



FOLLOW US



www.facebook.com/ZetorNorthAmerica
www.twitter.com/ZetorNA
www.instagram.com/ZetorNA
www.youtube.com/TraktoryZetor

1. PowerClutch™
2. Factory Loader 3rd Function
3. Joystick w/3rd Function
4. Factory Dual Remote Valves
5. Factory Swivel Operator Seat
6. Factory Premium Instructor Seat
7. Optional Pivoting Front Fenders
8. Optional Weights

ZETOR NORTH AMERICA

5784 Mining Terrace
 Jacksonville, FL, USA 32257
 PH: 904-647-7169
 Fax: 904-647-9346
www.ZetorNA.com
Sales@ZetorNA.com
Service@ZetorNA.com

EVERY EFFORT HAS BEEN MADE TO ENSURE THAT THE INFORMATION CONTAINED IN THIS PUBLICATION IS ACCURATE AND CURRENT. HOWEVER, INACCURACIES, ERRORS OR OMISSIONS MAY OCCUR AND DETAILS OF THE SPECIFICATIONS MAY BE CHANGED AT ANY TIME WITHOUT NOTICE. THEREFORE, ALL SPECIFICATIONS SHOULD BE CONFIRMED WITH YOUR ZETOR DEALER OR THE MANUFACTURE BEFORE ANY PURCHASE. THE IMAGES/PHOTOS ARE FOR ILLUSTRATIVE PURPOSE AND MAY VARY FROM ACTUAL PRODUCTS. SUBJECT TO CHANGE. 01/2020