

ZETOR MAJOR

M88 SSC



Tractor is Zetor. Since 1946.

Zetor

ZETOR M88 SSC

UTILITY AG TRACTOR

An All around All Weather CAB Mid-Size Utility tractor ideal for tight quarters, hobby farms, municipality, mowing and smaller hay operations.

It's has been designed to honor the basic pillars of the ZETOR brand.

With its power category, the M88 SSC builds on one of the most successful models in ZETOR's history.

This reliable, efficient and easy-to-maintain model has already acquired the reputation of a tractor that has been working for a lifetime.



4-Individual quick couplers with new dual valves with float positions/single acting/double acting plus 1-Zero return quick coupler

PERFORMANCE
Zetor M Series tractors combine Engine Performance with weigth distribution for maximum potential.

ENDURANCE
Simple, Efficient, Reliable.

TOTAL COST OF OWNERSHIP
Minimal fuel consumption, No Def Urea requirements, competitive parts cost.

Mechanical control of external hydraulic circuits and rear three-point hitch

4-Cylinder, Water-Cooled, Turbocharged DEUTZ Engine meets Stage V Emission standards

Electro-hydraulic connection of 4WD



Innovated display showing tractor speed and PTO revolutions

Spacious and practical cab

Left steps cover

Pivoting Front Fender Opt

Improvements of air inlet and engine cooling

DESIGN

STATE-OF-ART DESIGN

In 2015, ZETOR stunned the entire agricultural world by introducing the vision of future tractor design created in cooperation with the Italian studio Pininfarina. Elegance, passion and emotions perfectly combined with power, performance and resilience of agriculture tractors.

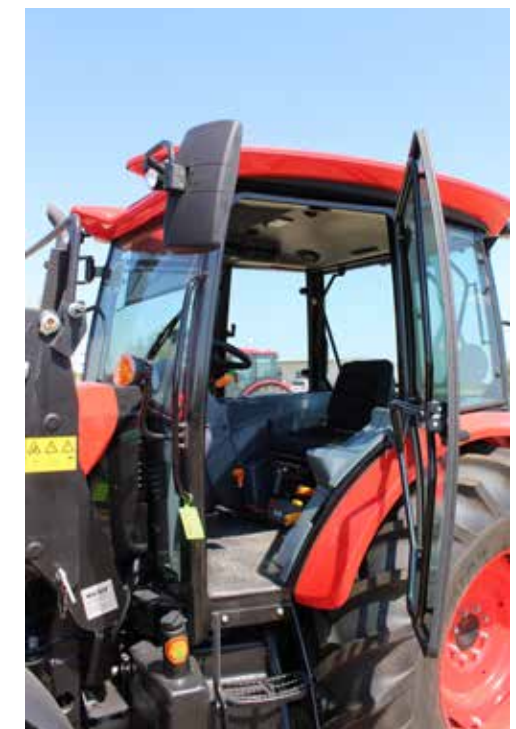
The vision became reality in 2020, when ZETOR North America introduced the new M85 SSC and in 2022 the new M88 SSC models.

The results, a defining product line with high aesthetic value sloping bonnet, dominant shape, redesigned CAB with improved Air Conditioning output and Front Loader Operation.

Location and reshape of the headlights, and reposition of the the ZETOR logo to the front center panel form a unique, vivid impression.

We must not forget the tractor's rear lights, which are elegantly fitted in the rear fenders, creating a graceful and coherent curve.

The new Pininfarina design uniquely combines the robustness of an agriculture tractor with its practicability and attractive, emotionally tuned design.



ENGINE

FOUR CYLINDERS UNDER THE HOOD

The M88 SSC is equipped with a four-cylinder water cooled, turbocharged DEUTZ engine meeting STAGE V Emissions Standards without the use of Def Fluid.

The engine comes equipped with a high-pressure Common-Rail fuel injection system ensuring lower fuel consumption and minimal production of harmful emissions.

The engine also features easy starting ability even at very low temperatures and in extreme conditions.

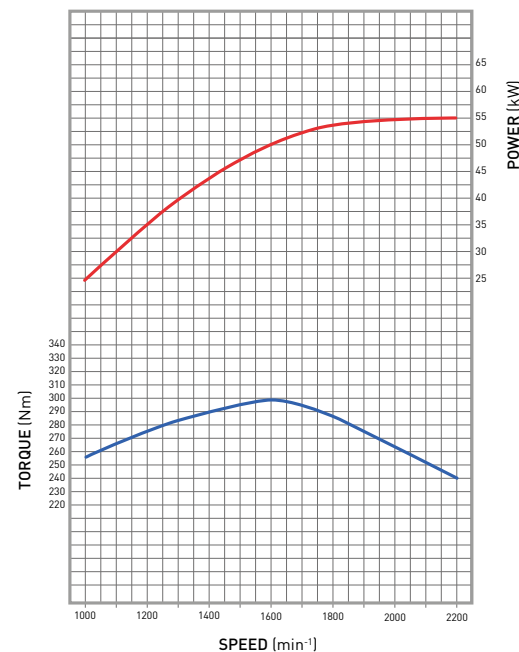
Stage V Emission Standard is reached by using exhaust gas recirculation (EGR), diesel oxidation catalyst (DOC) and diesel particulate filter (DPF) without the need to use Def Urea exhaust fluid.



- Stage V emission standard is reached by using exhaust gas recirculation (EGR), diesel oxidation catalyst (DOC) and diesel particulate filter (DPF) with no need to use urea
- Proven 4-cylinder in-line engine
- Gross Power 61.1 kW / 82 HP
- Net Power 55 kW / 75 HP
- Displacement 2.9 liter
- High pressure Common Rail system
- Turbocharger with intercooler

ENGINE OUTPUT CHARACTERISTIC

TCD 2.9 L4 ENGINE



- Air compressor is optional, ideal for flat repairs and clean-out of radiator and coolers
- Electronic regulation for smooth engine operation
- High torque reserve (engine retains performance without frequent gear changing)
- Wide range of constant power
- Full power is always available (the tractors do not use Powerboost technology)

CAB

SPACIOUS AND PRACTICAL

The cab is designed with regard to practical use. Plenty of space and ergonomically designed controls facilitate the work of the tractor operator. Doors of the six-pillar cabin frame open in a wide angle making entry comfortable without limitations. Narrow pillars allow very good panoramic view around the cabin and of the front loader.

STANDARD CABIN

STANDARD cabin offers a version with a hard roof and a version with FOPS (Falling-Objects Protective Structures) and a sunroof. To increase overall comfort, the CAB is equipped with air-conditioning, tinted glass and a mechanical suspended seat with seatbelt.

CABIN FEATURES AND ADDITIONAL EQUIPMENT

- New tilt steering column
- Practical layout of controls:
 - 3-Point Hitch Controls
 - Color rear remote valve controls
 - Electrical switches
 - Turn signals and emergency flashers
 - Horn
 - Wipers and windshield washer
 - Air flow control



HYDRAULICS

SIMPLICITY IS STRENGTH

The MAJOR model series offers mechanically regulated hydraulic system. The internal hydraulic circuit controls rear three-point hitch lifting. It is characterized by lift capacity, continuous lowering sensitivity and speed control, including a function for transporting implements.

Dual external hydraulic pumps supply pressure oil to the 3-point hitch and rear remote valves and a second pump supplies pressure oil to power steering. The tractor is equipped with two rear valves with a zero pressure return coupler. A third rear remote valve is optional.

- Mechanical hydraulics with position and draft regulation
- Maximum lifting capacity 5,500 Lbs
- Smooth starting control
- 2 -Rear Remote Valves and 1-Zero return coupler
- Mechanical control - high durability and long life
- Safety shut-off for implement transport
- Simple and easy maintenance



TRANSMISSION

HIGHER PRODUCTIVITY

The M88 SSC tractor is equipped with a forward/reverse Synchronized Shuttle, 4-speed synchronized transmission and three ranges. The total number of speeds is 12 forward and 12 reverse.

- 4-speed transmission
- 3 ranges
- 12/12 synchronized shuttle
- Maximum speed 19 Mp/h
- PTO speeds of 540/1,000
- Ground speed or independent PTO
- Operator presence detection



FRONT END LOADERS

CUSTOM FIT LOADERS FOR ZETOR TRACTORS

ZETOR SYSTEMS offers Front End Loaders designed specifically for ZETOR tractors. The M88 SSC tractor can be fitted with two ZM Series loaders depending on customer needs. ZM Series loaders have a robust design with Strength, Safety and Longevity in mind providing high lifting and work capacity.

The ZM Series loaders are packed with features that enhance its use, like factory 3rd Function. 3rd function gives the operator another feature without an added expense to operate attachments such as a bale squeezer, side shift pallet forks, grapples and more.

The ZM Series loaders can be equipped with either a Euro or Skid Steer Style Carrier.

No tools are needed to disconnect from your ZM Series loader. The solid, smooth and integrated support legs further simplify connection and disconnection.



ZETOR
SYSTEM

MODEL	UNITS	ZM229-1	ZM229
Lift height at pivot pin	in/mm	136.8 / 3475	136.8 / 3475
Lift height under work attachment	in/mm	119.6 / 3038	119.6 / 3038
Max. Rollback angle	•	55	55
Max. Dump angle	•	34	34
Lift Capacity at pivot pin (at max. lift height)	Lb/kg	2,860 / 1,300	3,520 / 1,600
Lift Capacity at pivot pin (at 60 in / 1.5 m. lift height)	Lb/kg	3,625 / 1,647	4,290 / 1,950
Front loader weight	kg	1,320 / 600	1,430 / 650
Front bucket sizes	in/mm	78, 86 / 2.0, 2.2	
Skid Steer Carrier	•	Yes	Yes
Euro Carrier	•	Yes	Yes

OPTIONAL EQUIPMENT

- **MULTICOUPLING**
Multicoupling is another function that makes putting the loader on and taking it off so much easier. Multicoupling means you no longer need to connect individual hydraulic circuits and electric connectors separately, you can conveniently plug in everything together at the same time.
- **3RD SERVICE**
Standard equipment on all ZM Series loaders from Zetor.
- **SOFT-DRIVE**
Features Nitrogen filled Accumulators mounted to the loader boom and plumbed into the hydraulic circuits. The Nitrogen filled Accumulators helps take the shock and bounce out of the ride when going across rough terrain with an attachment on the carrier or in the bucket.

ZETOR ORIGINAL PARTS

ZETOR TRACTORS a.s. secures the world-wide sale of original ZETOR parts for the warranty and post-warranty service of ZETOR tractors through its distribution network. The quality of parts is continually checked during production and is identical to the quality of the used in the assembly of new products.

The original parts include all improvements and innovations ensuring the full restoration of the operational and utility characteristics of the repaired tractor and loader. The authenticity of the supplied parts is secured by packing in original packing with a unique identification number.

- ZETOR parts attain high quality for reasonable prices
- In order to maintain the high lifetime of the tractor, we recommend using only original ZETOR parts



ZETOR original parts are available only through an authorized ZETOR North America dealer and or through Zetor North Americ. For more information, visit www.zetorNA.com

ZETOR ORIGINAL LUBRICANTS

ZETOR recommends original lubricants, which are identical to what the tractors are filled with from the factory.

ZETOR lubricants can be purchased through Zetor's Authorized Dealer Network and Zetor North America.

- Engine oils
- Transmission oils
- Front axle oil
- Hydraulic oil

Extend the life of your tractor by using ZETOR lubricants.



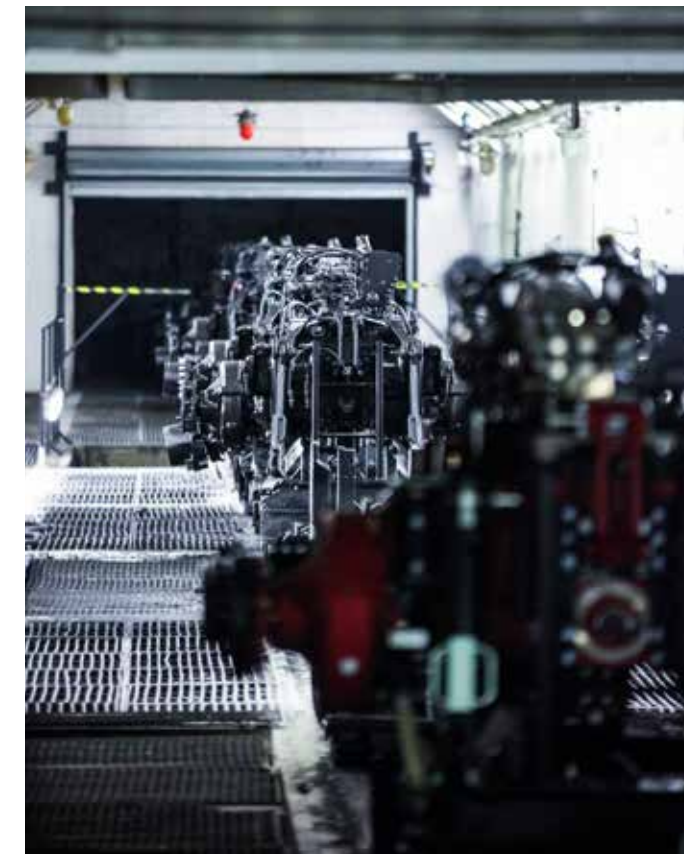
DEVELOPED AND MANUFACTURATED IN THE HEART OF EUROPE

MORE THAN ONE MILLION CUSTOMERS CANNOT BE WRONG

PRODUCTION

The manufacturing base of ZETOR tractors, engines and transmissions is concentrated in the Czech Republic. The background of our own development and manufacturing center contributes to the ultimate quality of the offered products and enables the effective management of innovation development and application.

ZETOR TRACTORS a.s. is a responsible company that emphasizes quality of its products, ecology and protection of the environment. These principles are guaranteed by ISO 9001 compliance, which the company has acquired.



Since the beginning of the production of ZETOR brand tractors in 1946, more than 1.3 million units have been made, with the majority of these units being exported to over 130 countries around the world.



ZETOR MAJOR M88 SSC

MODEL	UNITS	MAJOR M88 SSC
ENGINE		
Type	•	Deutz TCD 2.9 L4
Emission level	•	Stage V
Engine design	•	Water-cooled, Diesel, direct fuel injection, CommonRail, turbocharged, DOC filter, DPF
Gross Horse Power	•	82 HP / 61.1 kW
Rated PTO Horse Power	•	69.5 HP / 51.8 kW
Rated speed	rpm	2,200
Net power (ECE R120)	kW	55.4
	HP	75.3
Rated speed	rpm	2,200
No. of Cylinders / Valves	•	4 / 8
Aspiration	•	Turbocharged
Displacement	cm ³	2,925
Bore / Stroke	mm	92 / 110
Max. Torque	•	221.3 FtLbs. / 300.0 Nm
Torque rise	%	25
TRANSMISSION		
Type	•	4 synchronized gears with 3 ranges
Shifting	•	Fully Synchronized
Number of gears (F/R)	•	12/12
Reverser	•	Mechanical (SynchroShuttle)
Max. speed	•	19 Mp/h / 30km/h
PTO		
Type	•	Independent / ground speed
Rear PTO Revolutions	rpm	540 / 1,000
Control	•	Mechanical
End piece ^{OPT}	•	6 grooves CW or 6 grooves CCV
Front PTO Revolutions ^{OPT}	rpm	1,000
Max. power of front PTO ^{OPT}	•	47 HP / 35 kW
HYDRAULICS		
Type	•	Mechanical
Total Hydraulic Flow	•	20 GPM / 75.7 L/min
Hydraulics control	•	Mechanical
Rear hydraulic remotes (Quickcouplers)	•	2+1 / 3+1 ^{OPT}

MODEL	UNITS	MAJOR M88 SSC
THREE-POINT HITCH		
Type	•	Category II
Max. Lift Capacity	•	5,500 LBS / 2,500 kg
Max. Lifting Capacity of front TPH ^{OPT}	•	2,922 LBS / 1,328 kg
CAB		
Roof	•	Standard / Protective roof FOPS + sunroof ^{OPT}
Operator Seat	•	Mechanically suspended STANDARD seat with safety belt / Pneumatic suspension ^{OPT}
Heating	•	Standard
Air-Conditioning	•	Standard
Pre-Wiring for Radio	•	Standard
Radio	•	Standard
Steering Wheel	•	Tilt
Beacon	•	OPT
UNDERCARRIAGE		
Drive System	•	4WD
Steering	•	Hydrostatic
Operating brakes	•	Mechanical with connecting the front axle
Trailer brakes ^{OPT}	•	Pneumatic 2+1 hoses or hydraulic & pneumatic 2+0 hoses
Fuel tank	•	21.1 USG / 80 L
Front Fenders	•	OPT
OTHER SPECIFICATION		
Operating Weight *	•	8,019 Lbs / 3,645 kg
Max. Technically permissible weight	•	9,460 Lbs / 4,300 kg
Factory Front Ballast Option	•	660 Lbs / 300 kg
Factory Rear Wheel Ballast Option	•	528 Lbs / 240 kg
Length max.** - min.	•	177.6 - 138 inch / 4,511 - 3,505 mm
Width max.*** - min.	•	88.22 - 76.4 inch / 2,241 - 1,941 mm
Height max. - min.	•	101.8 - 100.8 inch / 2,586 - 2,560 mm
Wheelbase	•	87 inch / 2,210 mm
WHEELS		
Front and Rear Wheels combination	•	Adjustable: 12.4 - 24 R1 Front / 18.4 - 30 R1 Rear




^{OPT} Optional equipment * Without front and rear ballast ** Max. length with 3PH and front ballast *** Max. width without mirrors

Zetor

My family.
My work.
My Zetor.



FOLLOW US

-  facebook.com/zetor
-  twitter.com/zetortractors
-  instagram.com/zetortractors
-  youtube.com/traktoryzetor

www.zetorna.com

DEALER:

THE PICTURES AND PHOTOGRAPHS USED ARE MERELY FOR ILLUSTRATION PURPOSES, AS THE PRODUCTS DEPICTED IN THIS CATALOGUE MAY SHOW ITEMS OF EQUIPMENT THAT ARE NOT AVAILABLE IN STANDARD MODELS AND MAY BE AVAILABLE AS OPTIONAL EXTRAS. ZETOR TRACTORS a.s. RESERVES THE RIGHT TO CHANGE THE DATA AND INFORMATION PUBLISHED IN THIS CATALOGUE WITHOUT PREVIOUS NOTIFICATION. ZETOR TRACTORS a.s. IS NOT LIABLE FOR ISSUES ARISING FROM ANY POTENTIALLY FAULTY INFORMATION PUBLISHED IN THIS CATALOGUE. THIS CATALOGUE WAS LAST REVIEWED ON: 09/2022